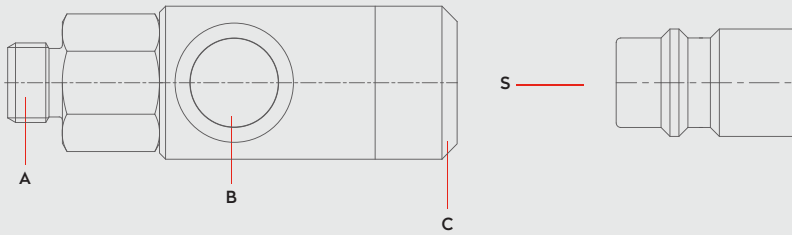


PNEUMATIC COUPLINGS  
PNEUMATISCHE KUPPLUNGEN


# SERIE 025S.08

## Materials




## Material Code

- A = Brass Nickel Plated
- B = Steel Zinc Plated
- C = Aluminium
- S = Steel Zinc Plated



0 - 12 bar  
(0-174 PSI)



-20° to + 100°C (NBR)  
-4° to + 212°F

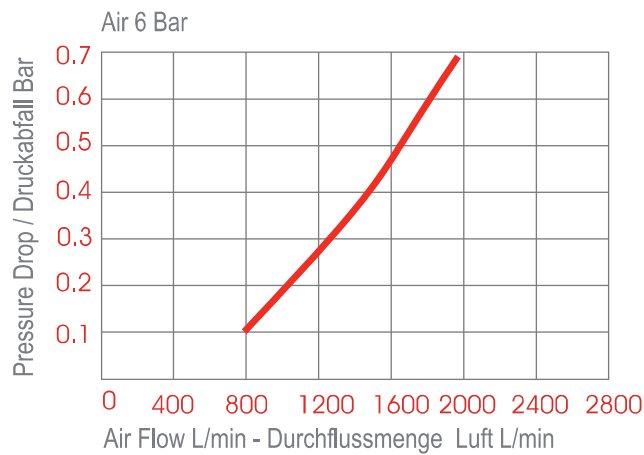
Shut Off Type




OM 190 - 00580  
OM 178 - 00925  
OM 178 - 00975

**2 - STAGE**  
**ISO 4414**

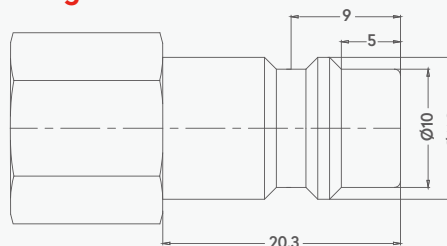
**DN 7.4 mm**



## Options

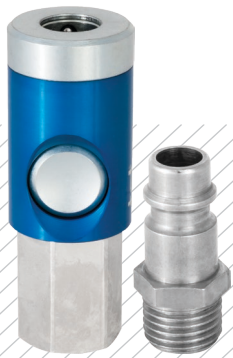


## Plug Profile Serie 025S.08



## Compatible with

- TST 026
- PARKER - RECTUS 25, 26
- CEJN 320
- JWL 520, 530
- PARKER PEF
- LEGRIS

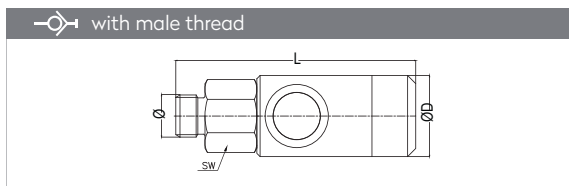


ISO 4414  
Euro Profile

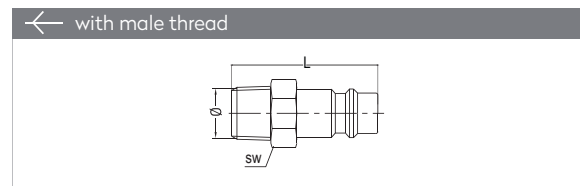
# SERIE 025S.08

## QUICK COUPLINGS SCHNELLKUPPLUNGEN

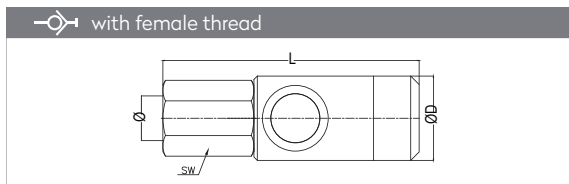
## PLUGS STECKNIPPEL



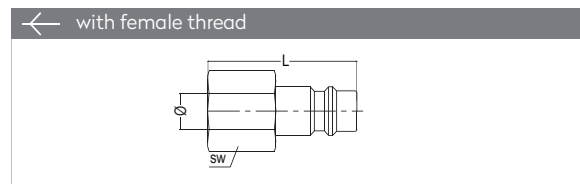
Connection	Part No.	SW	L	ØD
BSPT 1/4"	025S.08 EG 13	20	69,3	26
BSPT 3/8"	025S.08 EG 17	20	68,3	26
BSPT 1/2"	025S.08 EG 21	25	70,3	26



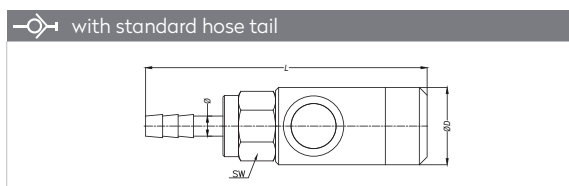
Connection	Part No.	SW	L
BSPT 1/8"	025 RU 10	13	33
BSPT 1/4"	025 RU 13	14	37
BSPT 3/8"	025 RU 17	17	37
BSPT 1/2"	025 RU 21	22	43
M 14 x 1,5	025 EUM 14	17	33
M 16 x 1,5	025 EUM 16	17	33
M 18 x 1,5	025 EUM 18	21	38



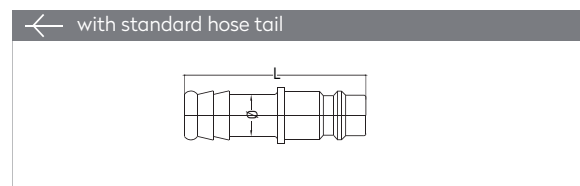
Connection	Part No.	SW	L	ØD
BSP 1/4"	025S.08 DG 13	20	67,8	26
BSP 3/8"	025S.08 DG 17	20	72,3	26
BSP 1/2"	025S.08 DG 21	25	74,3	26



Connection	Part No.	SW	L
BSPT 1/8"	025 DU 10	14	32
BSPT 1/4"	025 DU 13	17	33
BSPT 3/8"	025 DU 17	19	33
BSPT 1/2"	025 DU 21	24	36
M 14 x 1,5	025 DUM 14	17	33
M 16 x 1,5	025 DUM 16	19	33
M 18 x 1,5	025 DUM 18	22	33



Connection	Part No.	SW	L	ØD
Ø 6 - 1/4"	025S.08 HG 06	20	83,6	26
Ø 8 - 5/16"	025S.08 HG 08	20	83,6	26
Ø 10 - 3/8"	025S.08 HG 10	20	83,6	26



Connection	Part No.	L
6 mm - 1/4"	025 HU 06	46
8 mm - 5/16"	025 HU 08	46
9 mm - 5/14"	025 HU 09	46
10 mm - 3/8"	025 HU 10	48
13 mm - 1/2"	025 HU 13	48
16 mm - 5/8"	025 HU 16	48