

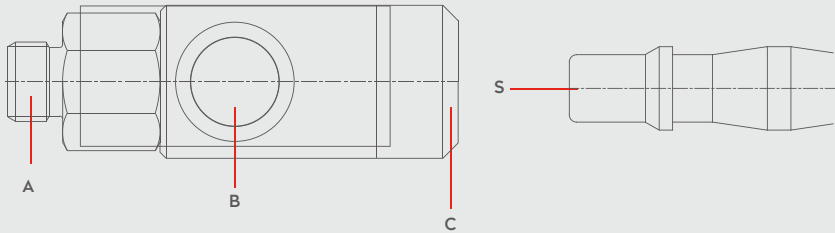


PNEUMATIC COUPLINGS
PNEUMATISCHE KUPPLUNGEN

SERIE 019S.06


DN 5.5

Materials




Material Code

- A = Brass Nickel Plated
- B = Steel Zinc Plated
- C = Aluminium
- S = Steel Nickel Plated

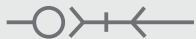


0 - 12 bar
(0-174 PSI)



-20° to + 100°C (NBR)
-4° to + 212°F

Shut Off Type




OM 178 - 00765
OM 178 - 00410
OM 200 - 00800

2 - STAGE
ISO 4414

DN 5.5 mm

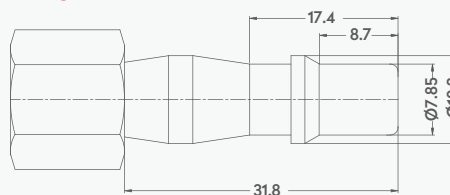
Options

SWING
P Serie

SWIVEL

AISI303
Stainless Steel

Plug Profile Serie 019S.06



Compatible with

- PCL 60
- PARKER - RECTUS 19



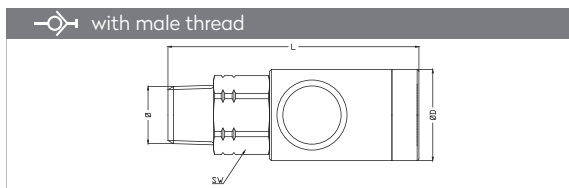
ISO 4414

British Profile

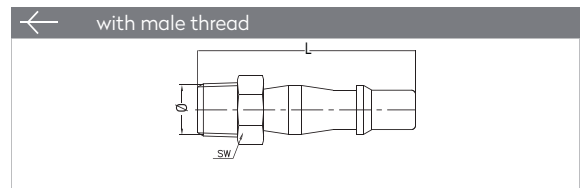
SERIE 019S.06

QUICK COUPLINGS SCHNELLKUPPLUNGEN

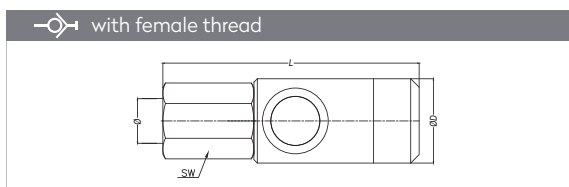
PLUGS STECKNIPPEL



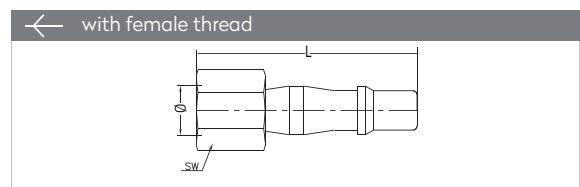
Connection	Part No.	SW	L	ØD
BSPT 1/4"	019S.06 RG 13	20	71	26
BSPT 3/8"	019S.06 RG 17	20	72	26
BSPT 1/2"	019S.06 RG 21	25	76	26



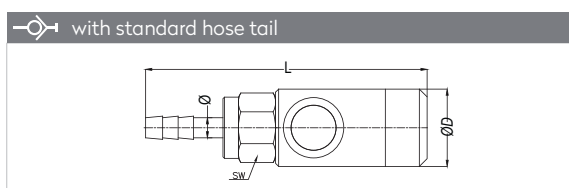
Connection	Part No.	SW	L
BSPT 1/4"	019 RU 13	14	48,5
BSPT 3/8"	019 RU 17	17	48,5
BSPT 1/2"	019 RU 21	22	53,5



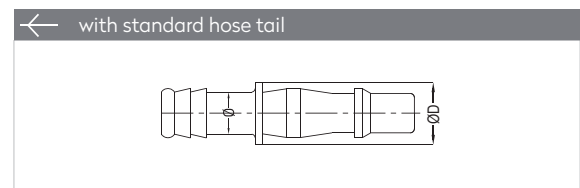
Connection	Part No.	SW	L	ØD
BSP 1/4"	019S.06 DG 13	20	67,5	26
BSP 3/8"	019S.06 DG 17	20	72	26
BSP 1/2"	019S.06 DG 21	25	74	26



Connection	Part No.	SW	L
BSP 1/8"	019 DU 10	14	45
BSP 1/4"	019 DU 13	17	47
BSP 3/8"	019 DU 17	19	47
BSP 1/2"	019 DU 21	24	48



Connection	Part No.	SW	L	ØD
Ø 6 - 1/4"	019S.06 HG 06	20	83,3	26
Ø 8 - 5/16"	019S.06 HG 08	20	83,3	26
Ø 10 - 3/8"	019S.06 HG 10	20	83,3	26



Connection	Part No.	L	ØD
6 mm - 1/4"	019 HU 06	58	11
8 mm - 5/16"	019 HU 08	58	11
10 mm - 3/8"	019 HU 10	58	12
13 mm - 1/2"	019 HU 13	58	15