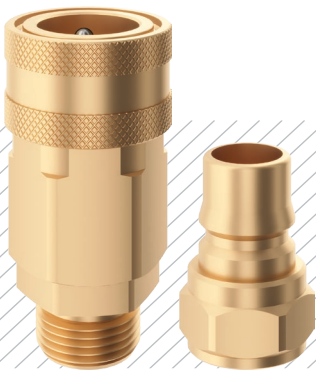


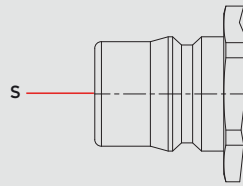
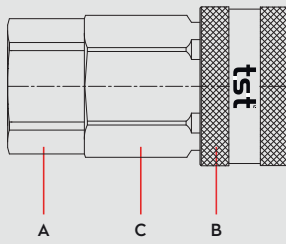
WATER COUPLINGS
WASSERKUPPLUNGEN

DN 19-32

SERIE 071



Materials




Material Code

A = Brass


B = Brass

C = Brass

S = Brass




0 - 35 bar



-40°C to + 105°C (NBR)

Shut Off Type

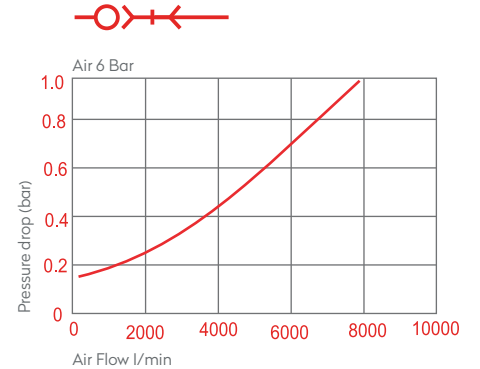
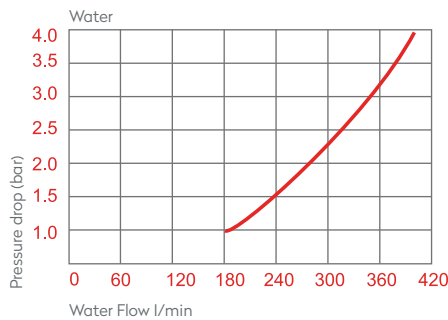
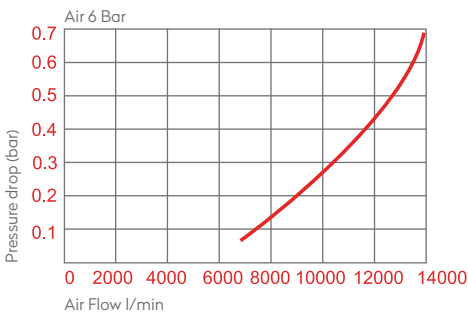


FLOW

7800 lt/min → 1/2" - 3/4"
9500 lt/min → 1" - 1 1/4"

DN

DN 19 → 1/2" - 3/4"
DN 32 → 1" - 1 1/4"



Options

FPM



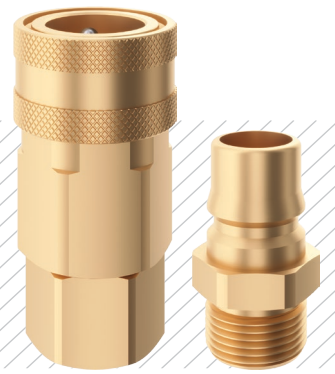
NICKEL

AISI316
Stainless Steel

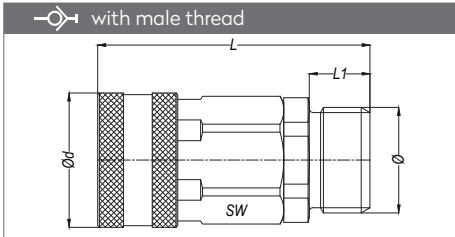
Applications

Compatible with

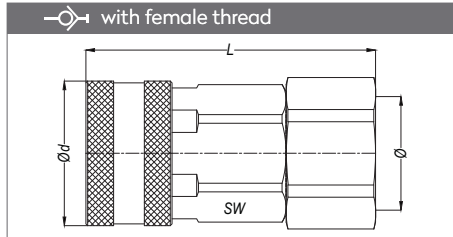
TST DESIGN



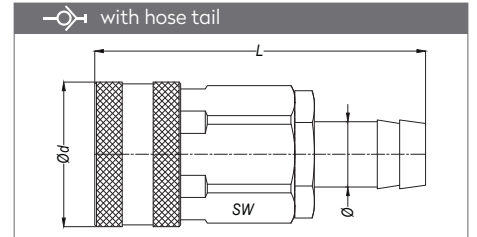
VALVED QUICK COUPLINGS SCHNELLKUPPLUNGEN MIT VENTIL



Part No.	Ø	SW	L	L1	Ød
071 EG 21	BSP 1/2"	36	80	14	42
071 EG 26	BSP 3/4"	36	82	16	42
071 EG 33	BSP 1"	36	85	19	42
071 EG 42	BSP 1 1/4"	36	85	19	42

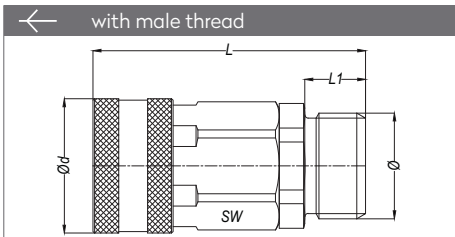


Part No.	Ø	SW	L	Ød
071 DG 21	BSP 1/2"	36	80	42
071 DG 26	BSP 3/4"	36	81	42
071 DG 33	BSP 1"	36	84	42
071 DG 42	BSP 1 1/4"	36	85	42

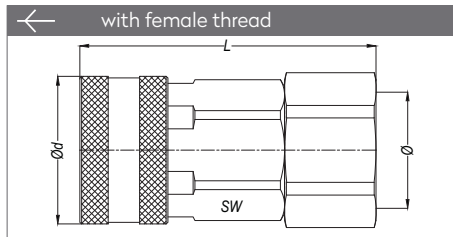


Part No.	Ø	SW	L	Ød
071 HG 16	16 mm-5/8"	36	96	42
071 HG 19	19 mm-3/4"	36	96	42
071 HG 25	25 mm-1"	36	96	42

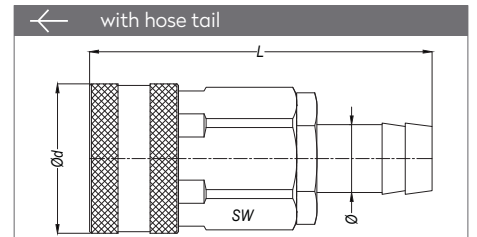
UNVALVED QUICK COUPLINGS SCHNELLKUPPLUNGEN OHNE VENTIL



Part No.	Ø	SW	L	L1	Ød
071 EGF 21	BSP 1/2"	32	80	14	42
071 EGF 26	BSP 3/4"	32	82	16	42
071 EGF 33	BSP 1"	36	85	19	42
071 EGF 42	BSP 1 1/4"	46	85	19	42

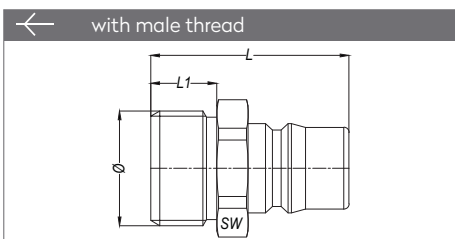


Part No.	Ø	SW	L	Ød
071 DGF 21	BSP 1/2"	36	80	42
071 DGF 26	BSP 3/4"	36	81	42
071 DGF 33	BSP 1"	36	84	42
071 DGF 42	BSP 1 1/4"	36	85	42

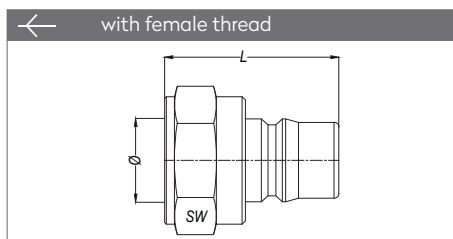


Part No.	Ø	SW	L	Ød
071 HGF 16	16 mm-5/8"	36	96	42
071 HGF 19	19 mm-3/4"	36	96	42
071 HGF 25	25 mm-1"	36	96	42

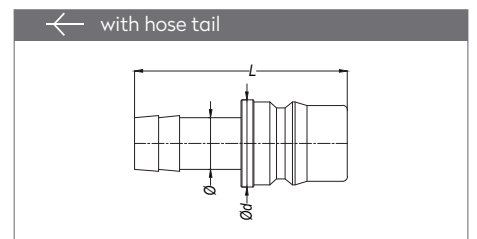
PLUGS STECKNIPPEL



Part No.	Ø	SW	L	L1
071 EU 26	BSP 3/4"	30	54	16
071 EU 33	BSP 1"	36	57	19
071 EU 42	BSP 1 1/4"	45	60	22



Part No.	Ø	SW	L
071 DU 26	BSP 3/4"	32	51
071 DU 33	BSP 1"	41	54
071 DU 42	BSP 1 1/4"	50	54



Part No.	Ø	L	Ød
071 HU 16	16 mm-5/8"	66	27
071 HU 19	19 mm-3/4"	66	27
071 HU 25	25 mm-1"	66	27